



# MODERN ROCK

*David Atkinson Lighting Design has delivered a contemporary scheme for the new Commonwealth Park on Gibraltar, blending traditional British values with mediterranean style.*

The Commonwealth Park in Gibraltar is a former car park site that has been transformed into a sustainable park, boasting both traditional British values and a 'cutting edge' Mediterranean style. The park has 135 different trees, as well as lakes, grass mounds and decking areas, with the dramatic historic backdrop of the King's Bastion and City walls.

David Atkinson Lighting Design (DALD) worked closely alongside the landscape architects, Landform, to create an exciting but subtle lighting scheme for the park, as well as adhering to conservation requirements, security, energy efficiency and sustainability.

The historic perimeter walls consist of the curved King's Bastion Wall and City Wall. The curved King's Bastion Wall to the north end of the site is up lit by a series of buried fixtures fitted with a tiltable medium and narrow beam optic, which helps to accentuate the contours of the stone and form. A 4000K LED light source was chosen to enhance the colour of the grey stone.

The angular City Wall linking with the curved King's Bastion wall to the north, east and south elevations are lit by a series of surface mounted, high output, narrow optic spots, which graze the wall with shafts of light. The LED spots are positioned directly below the city wall and aligned with the wall piers.

The upper terrace above the City Wall is linked to the park via a listed link tunnel, contemporary staircase and lift. To limit any visual impact within the tunnel two internally illuminated handrails provide sufficient light to the floor. The illuminated handrails continue from the tunnel to the external staircase that encompasses the lift shaft.

To help give the lift shaft a dynamic appearance, a series of RGBW LED sources up light the internal glass shaft with preprogrammed hues of colour.

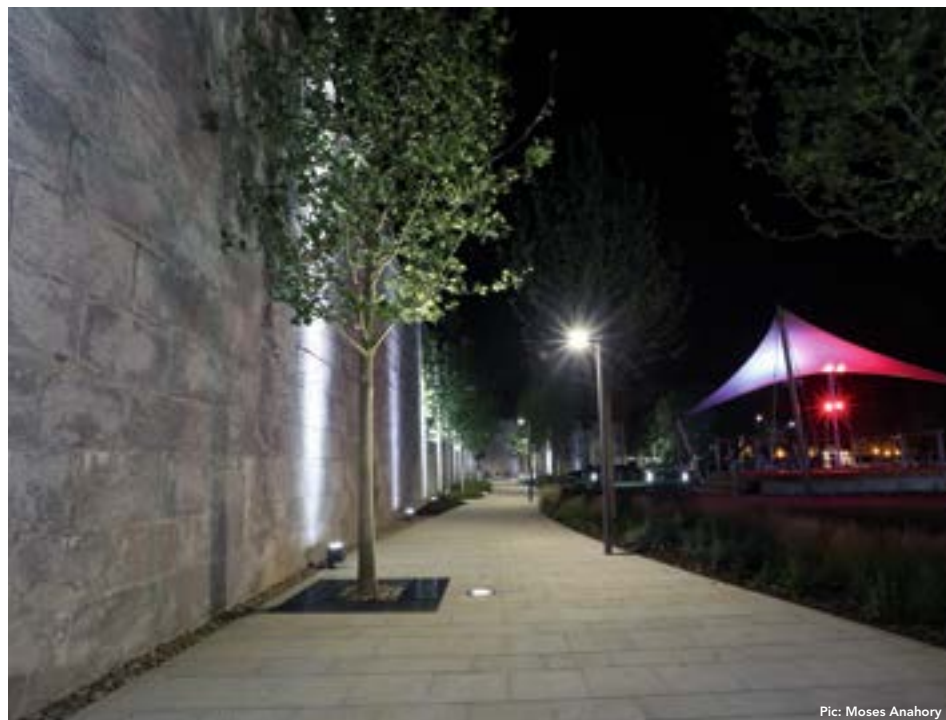
The park has a perimeter roadway/walkway, which is illuminated by compact LED fixtures fitted with 3000K sources, which are mounted off 3.5m vertical columns. Some

The new Commonwealth Park is bound by tall, historic walls. These are grazed by surface mounted, iGuzzini Large body iPro fixtures along the main City wall, and inground fixtures along the curved Bastion wall (pictured top right).

Inside the park space, key elements like the contemporary bandstand and 'monolithic column' water feature are given special lighting solutions. DALD chose a limited number of sources in picking out key areas within the park, with the planting subtly modelled by single point sources.



Pic: David Parody



Pic: Moses Anahory



Pic: Moses Anahory



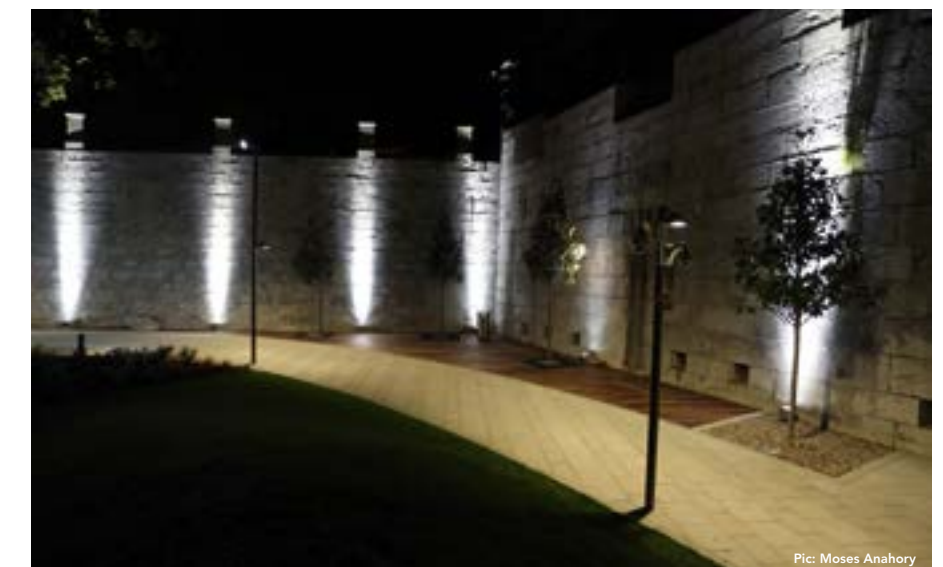
Pic: Moses Anahory



Pic: Moses Anahory



Pic: Moses Anahory



Pic: Moses Anahory

of the vertical columns increase in height to 5.5m in order to accommodate high output LED accent fixtures that illuminate sculptural pieces. A link walkway from the west side of the park is illuminated by semi recessed marker lights, which helps to set up an interesting view into the park.

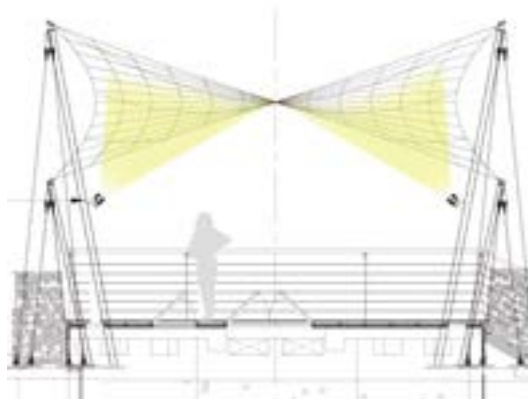
As a part of the intrinsic landscape design internal tertiary paths weave through the park. Illumination of the tertiary paths are by minimalistic tubular bollards fitted with T5 lamps, with a colour temperature of 4000K. Each bollard is offset along the length of the path which helps define the flowing landscape design.

To the north and south of the park there are decking areas that incorporate adjustable recessed LED fixtures. The fixtures up light Magnolia grandiflora shrubs from one side and are fitted with warm white LED (3000K), which help to offset the shrubs against the city wall.

Throughout the park, seating benches are under lit by recessed LED strips, which project a soft diffused glow under the benches. The central area within the park consists of perimeter planting, benches and monolithic water feature columns. Each monolithic column is fitted with a recessed custom IP68 LED ring that accentuate the water flow by piping the water through the centre of each fixture. In addition to the integral lighting, recessed IP68 fixtures up light each monolithic column. Positioned within the catchment pool, they reflect and refract light across the column faces.

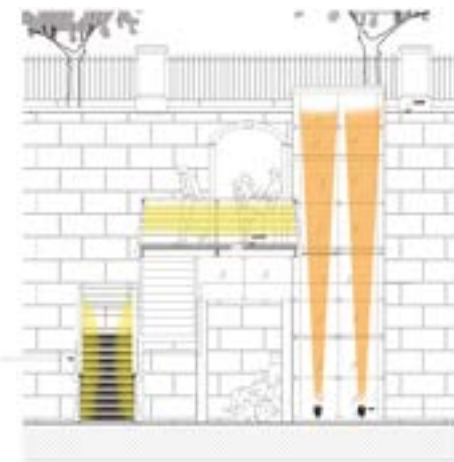
An artificial lake is subtly illuminated by submerged IP68 fixtures, which pick out rock and water features. A link bridge across the lake is lit by miniature recessed decking lights, which help to accentuate the form of the bridge.

A contemporary bandstand is built out into the lake and features a tensile roof, which is up lit by RGBW LED sources and



#### BAND STAND

Four Teclumen RGBA Fusion positioned off angled supports - units require data (DMX) cabling and power.

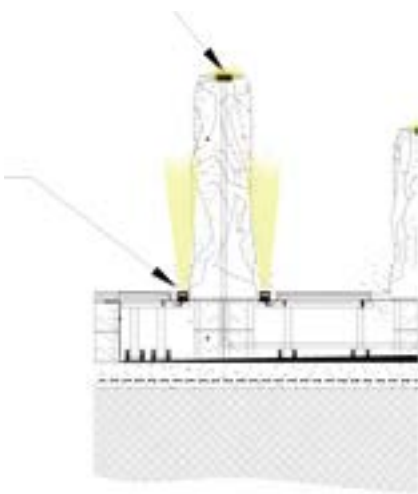


#### STAIRS

Metamount internally illuminated handrail

#### LIFT

Teclumen RGBA Fusion position within lift shaft - units require data (DMX) cabling + power. Four mounted at bottom of shaft



#### MONOLITHIC COLUMNS

MJL LED Ring set within the varying height monolithic columns. Custom IP68 fixtures will accentuate the water flow by piping the water through the centre of the fixture.

Ares buried Tapioca LED 10° set into soak away base. Fixtures require remote IP rated drivers.

## JAPANESE

ジブラルタルのCommonwealth Parkは以前、駐車場として使われていたが、イギリスの伝統的価値観と現代地中海のスタイルを融合した地球にやさしい公園へと生まれ変わった。

David Atkinson Lighting Designが造園デザインを手掛けるLandformと力をあわせ、この公園のために作り上げたのは、刺激的でかつ繊細でありながら、環境規制と安全基準を満たした、エネルギー効率の高い持続可能な照明プラン。

史跡である外壁は曲線状のKing's Bastion Wallと City Wallから。公園北端に延びるKing's Bastion Wallは角度調整可能な中サイズのナロー配光のビーム光線を装着し、地面に埋め込まれた一連の照明によって照らし出される。壁の色を強調するために選ばれたのは相関色温度4000度のLED光源。起伏

のあるしたCity Wallを照らすのは、表面に装着された一連のハイパワー薄型光学LEDスポットライトの光線によるグレーディング照明。広大な芝生には斑模様の光が投影され、あたかも林の間を通る月光が映し出されているよう。モダンな野外ステージの屋根には伸張性があり、照明には4色LEDライトが使用されている。

## CHINESE

位于直布罗陀的联邦公园，其前身是个停车场，现已演变成了一个可持续发展的公园，融合了传统的英国价值观念和当代地中海风格。David Atkinson Lighting Design与景观设计公司 Landform 紧密合作，为公园设计了一个激动人心且十分精细的照明方案，坚持追求节能需求、安全性、能源效率和可持续发展。历史悠久的围墙包含两部分：弯曲的国王

堡城墙和城墙。国王堡城墙一直延伸到公园的最北端，由一系列埋灯具点亮，埋灯具则设有可倾斜媒介和窄束光，进一步映衬出石头的轮廓。4000K LED光源则被用来增强颜色亮度。至于菱角分明的城墙，它是由一系列装在高输出、窄视LED光点照亮，其光柱掠过墙面，甚是好。草地则被大面积投射光照亮，如月光透过树木般，光影斑驳。RGBW LED光源照亮了一个具有可拉伸屋顶的当代舞台。

## FRANÇAIS

Au stade du Commonwealth de Gibraltar, un ancien parking fut transformé en un parc durable, alliant les valeurs traditionnelles britanniques et un style méditerranéen contemporain. L'équipe de David Atkinson Lighting Design a travaillé en étroite collaboration avec les archi-

tectes-paysagistes de Landform afin de créer un ensemble d'éclairage passionnant, mais subtil pour le parc, s'adaptant aussi aux exigences de conservation, de sécurité, d'efficacité énergétique et de durabilité.

Le Bastion du roi et les murailles de la ville marquent le périmètre historique. Le Bastion du roi à l'extrémité nord du site est éclairé vers le haut par une série d'appareils enterrés et équipés de faisceaux optiques moyens et étroits inclinables, qui accentuent les contours de la pierre. Le choix d'une source de lumière D.E.L. de 4 000 K renforce sa couleur. La muraille angulaire de la ville est éclairée par une série de projecteurs à diodes luminescentes à optique étroite de haut rendement, montés en surface et qui effleurent le mur de puits de lumière.

De grandes étendues d'herbe sont éclairées d'une lumière tachetée, imitant l'effet de la lune à travers les arbres. Le toit tendu du kiosque à musique moderne est éclairé de diodes électroluminescentes RVBB.



Pic: Moses Anahory



Pic: Moses Anahory

Large expanses of grass are lit by projecting dappled light, which effectively mimics the effect of moonlight through trees. The dappled effect is created by a series of metal halide projectors attached to the top of the perimeter lighting columns.

programmed in with the lift shaft to reflect dynamic hues of colour across the bandstand and lake.

Large expanses of grass are lit by projecting dappled light, which effectively mimics the effect of moonlight through the trees. The dappled effect is created by a series of metal halide projectors attached to the top of the perimeter lighting columns. The general lighting to planting, shrubs and trees was achieved by a variety of lighting methods. DALD chose a limited number of sources in picking out key areas within the park, with the planting subtly modelled by single point sources. Large trees and shrubs were either up lit by buried LED sources or externally lit from a distance by ground

spike mounted projector fittings positioned within the planting. A warm 3000K colour temperature was chosen to enhance the greenery and off set the planting and trees from the coolness of the King's Bastion and City Wall.

Control of the lighting within the park is triggered via photocells that in turn activate lighting scenes from the control system. A basic lighting state with limited sources is activated at midnight for access and security.

Through the combination of creative lighting methods it enables the park to become an exciting, dynamic and safe space after dusk.

[www.dald.co.uk](http://www.dald.co.uk)

## PROJECT DETAILS

### The Commonwealth Park, Gibraltar

Client: Government of Gibraltar

Landscape Architect :Landform

Lighting Design: David Atkinson Lighting Design (DALD) - David Atkinson, Pedro Pinto.

## LIGHTING SPECIFIED

### iGuzzini:

9 x Light Up Walk with double adjustment / flood optic 28° / warm white

29 x Light Up Walk with double adjustment / flood optic 28° + narrow optic 10° / cool white

2 x Light Up Walk with double adjustment / narrow optic 10° / cool white

35 x iTek 24W warm white, complete with special bracket to fix to 3.5m & 5.5m column

45 x iPro large body narrow optic 15° 27w / cool white

2 x iPro large body narrow optic 15° 27w / warm white

13 x iPro medium body medium optic 28° 18w / warm white

16 x Light Up Balisage 20w hit

95 x Pencil - cylindrical bollard with electronic control gear for single emission

### Aldabra supplied by Lighting Assist:

43 x Aldabra T4 inground recessed strip 203CM

### Ares supplied by LIGHTWORKS:

22 x Tapioca buried LED 10°

16 x Maxi Martina IP68 underwater fixture 9 X 1W - 35°

21 x Idra 9 X 1W - 35°

### Concept Light supplied by Lighting Assist:

9 x CL Gobo Projector 150W

### HUNZA supplied by Light Ideas:

158 x Anti-tamper Hunza adjustable spike + GU10 LED 7W 3K

28 x P1 Path Lite LED

### Metamont supplied by Lighting Assist:

5 x LED illuminated handrail

### MJ Lighting:

13 x custom recessed 1P68 160MM ring set into monolithic column

### TECLUMEN supplied by Lighting Assist:

8 x Teclumen Fusion Color 6 FC RGBW

### PHAROS supplied by Lighting Assist:

1 x LPC control system

### Osram Lamps :

95 x T5 14w 840

### Phillips Lamps

9 x 150w CDM-T 3000K

16 x 20w CDM-TM 3000K

## DEUTSCH

Für den Commonwealth Park in Gibraltar wurde das ehemalige Gelände eines Parkplatzes in einen nachhaltigen Park verwandelt, der traditionelle britische Werte mit einem zeitgenössischen mediterranen Stil vereint.

David Atkinson Lighting Design arbeitete eng mit den Landschaftsarchitekten von Landform zusammen und hat ein sowohl interessantes wie auch subtiles Beleuchtungskonzept für den Park entwickelt, das Anforderungen in Bezug auf Bestandserhaltung, Sicherheit, Energieeffizienz und Nachhaltigkeit entspricht.

Die historischen Außenmauern bestehen aus der bogenförmigen King's Bastion Wall und der Stadtmauer. Die King's Bastion Wall zum nördlichen Ende des Geländes wird durch eine Reihe von vergrabenen Beleuchtungskörpern beleuchtet, die mit einem kippbaren Träger und einer enggebündelten Optik befestigt sind, wodurch die Konturen des Steins besser betont werden können. Eine 4000K LED-Lichtquelle wurde zur Verstärkung der Farbe

ausgewählt. Die winkelförmige Stadtmauer wird durch eine Reihe von obenflächenmontierten, leistungsstarken engen Optik-LED-Spots beleuchtet, die die Wand mit Lichtbündeln touchieren.

Große Rasenflächen werden mit einem projektierten, sanften Lichtmuster beleuchtet, das den Effekt von Mondlicht durch Bäume nachahmt. Ein moderner Konzertpavillon mit einem Spanndach wird durch RGBW LED-Quellen beleuchtet.

## ITALIANO

Per il Parco del Commonwealth a Gibilterra, un ex parcheggio è stato trasformato in un parco sostenibile, coniugando i valori tradizionali inglesi con uno stile mediterraneo contemporaneo.

David Atkinson Lighting Design ha lavorato a stretto contatto con i paesaggisti (Landform) per creare un sistema di illuminazione entusiasmante ma sottile per il parco, così come per aderire alle esigenze di conservazione, sicurezza, efficienza energetica e sostenibilità.

I muri storici perimetrali sono costituiti dai curvi King's Bastion Wall e City Wall. Il King's Bastion Wall, situato a nord nella parte finale della città, è illuminato da una serie di apparecchi interrati dotati di un supporto inclinabile e a stretto fascio ottico, che aiuta ad accentuare i contorni della pietra. Una sorgente di luce a LED da 4000K è stata scelta per esaltarne il colore. L'angolare City Wall è illuminato da una serie di faretti a LED a fascio di luce stretto che montati in cima, scalfiscono il muro con raggi di luce.

Delle grandi distese di erba sono illuminate con luce proiettata in modo variegato, simulando l'effetto del chiaro di luna attraverso gli alberi; invece un palco contemporaneo con tetto di trazione è illuminato da sorgenti LED RGBW.

## ESPAÑOL

El Commonwealth Park en Gibraltar, que solía ser una playa de estacionamiento, ha sido transformado en un parque sustentable, mezclando los valores tradicionales

Británicos con un estilo Mediterráneo contemporáneo.

David Atkinson Lighting Design trabajó de cerca junto con los arquitectos paisajistas, Landform, para crear un espectacular pero sutil proyecto de iluminación para el parque, a la vez que se ajustaban a los requisitos para la conservación, seguridad, eficiencia energética y la sustentabilidad.

Las históricas paredes perimetrales son las del Bastión del Rey y el Muro de la Ciudad. El Bastión del Rey, hacia el norte del sitio, está iluminado en la parte superior por una serie de artefactos empotrados, equipados con un rayo óptico ajustable, mediano y angosto. Para resaltar su color se eligió una fuente de luz LED de 4000K. El angular Muro de la Ciudad está iluminado por una serie de spots de LED de alta potencia de salida montados sobre la superficie, los cuales dibujan el muro con rayos de luz. Las grandes extensiones de césped son iluminadas con luz proyectada moteada, imitando el efecto de la luz de luna a través de los árboles. Una glorieta contemporánea con techo extensible se encuentra iluminada con fuentes RGBW LED.